

HEART OF TEXAS
HOMELESS COALITION
ADVOCACY • ASSISTANCE • ACKNOWLEDGEMENT

Continuum of Care 101

WHAT IS A **CONTINUUM OF CARE?**

What do CoCs Do?

- Promote a community-wide commitment to the goal of ending homelessness;
- Provide funding for efforts to quickly re-house individuals and families who are homeless, which minimizes the trauma and dislocation caused by homelessness;
- Promote access to and effective use of mainstream programs;
- Optimize self-sufficiency among individuals and families experiencing homelessness;
- Develop and implement a long-term plan to address homelessness, including housing and service gaps, in the CoC;
- Apply for the annual CoC Program Notice of Funding Availability (NOFA).

Who makes up the CoC?

In order to carry out the primary purpose of the COC Program, HUD requires representatives of relevant organizations to form a Continuum of Care to serve a specific geographic area. These representatives include:

- nonprofit homeless providers,
- victim services providers,
- faith-based organizations,
- governments,
- businesses,
- advocates,
- public housing agencies,
- school districts,
- social service providers,
- mental health agencies,
- hospitals,
- universities,
- affordable housing developers,
- law enforcement, and
- organizations that serve homeless and formerly homeless veterans, and homeless and formerly homeless individuals.

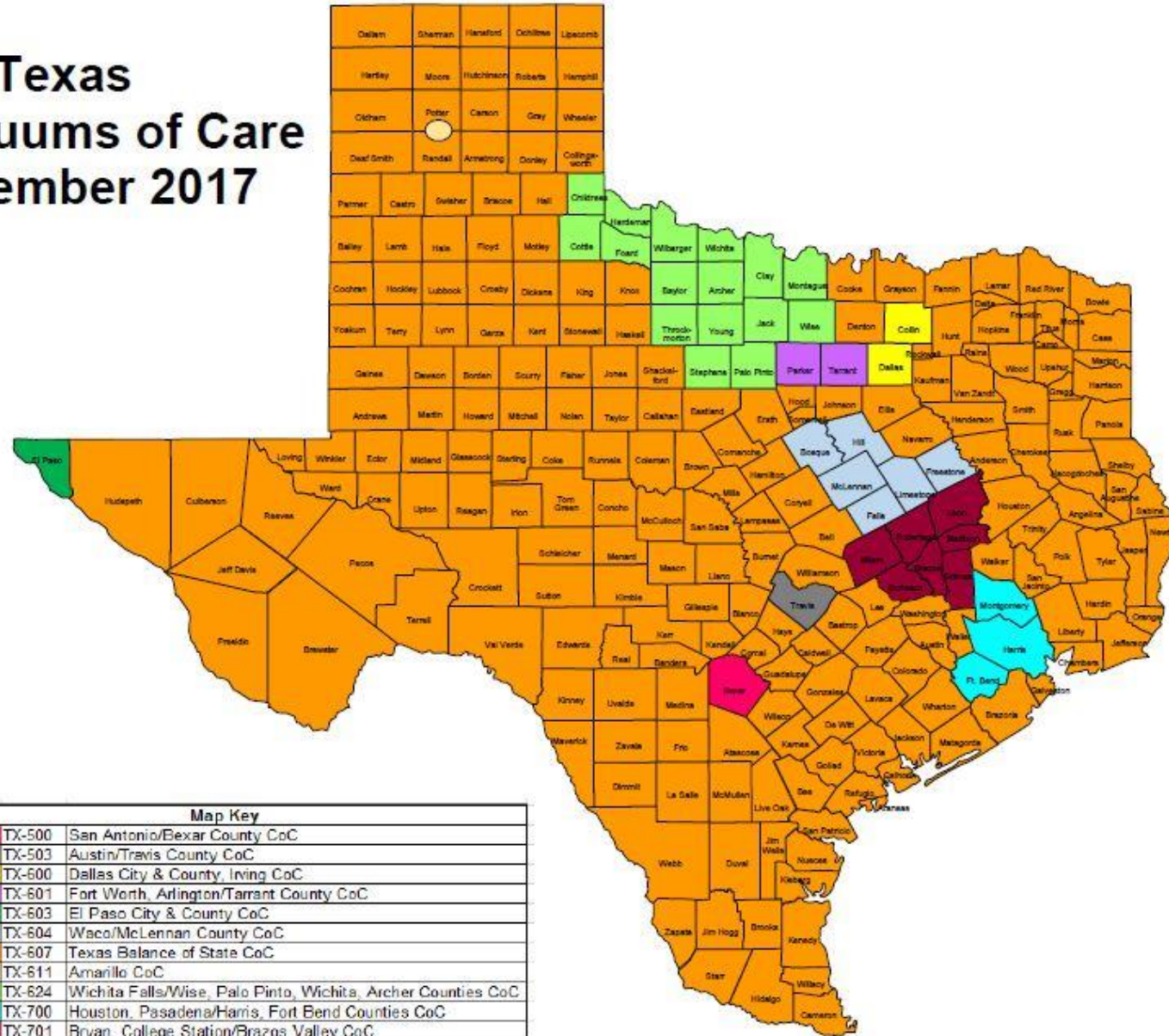
History of CoCs

- 1987 - First federal law specifically addressing homelessness:
McKinney-Vento Homeless Assistance Act
- May 2009 - the **Homeless Emergency Assistance and Rapid Transition to Housing (HEARTH) Act** of 2009 was signed into law, consolidating HUD's competitive grant programs
- July 2012 - **CoC Program Interim Rule** was published, which codified the basic structure and duties of a CoC

Our Continuum of Care

- HUD recognizes our CoC as **TX-604 – Waco/McLennan County CoC**, which consists of Bosque, Falls, Freestone, Hill, Limestone, and McLennan Counties.
- The **Heart of Texas Homeless Coalition** is the **Collaborative Applicant** for our CoC, which means HOTHOC submits the grant to HUD on behalf of the CoC.
- The **City of Waco** is the **CoC Lead Agency** for our CoC, which means the City of Waco is in charge of conducting planning activities for the CoC and is led by the **CoC Administrator**.
- The **City of Waco** as the **HMIS Lead Agency** for our CoC, which means the City of Waco is in charge of administering our HMIS database and is led by the **HMIS Administrator**.

Texas Continuums of Care September 2017



KEY CONCEPTS

The CoC **Program**

- The CoC **NOFA** (Notice of Funding Availability) is the catchall term for funding opportunities eligible under the CoC Program. It includes two activities:
 - *CoC operations (CoC Planning Grant)*
 - *CoC Program project funding*
- Individual organizations are awarded CoC Program funds to run “CoC Program projects” through an **annual competition**
- **Project types** funded in CoC Program: Permanent Supportive Housing (PSH), Rapid Re-housing (RRH), Transitional Housing (TH), Joint Component Transitional Housing – Rapid Re-housing (TH-RRH), Coordinated Entry Supportive Services Only (SSO), and HMIS

Housing **First**

- Housing First is both a **philosophy of services** and a **program model**
- It means that participants may receive **housing before anything else**, without preconditions of sobriety or service participation
- It also means participants **can't be denied** or **terminated** from housing based on non-participation in supportive services
- HUD **rewards** CoCs for using Housing First; therefore HOTHHC **rewards** projects that use Housing First

Homeless Management Information System (**HMIS**)

- **HMIS** – a local information technology system used to collect client-level data and data on provision of housing and services to homeless individuals and families, and persons at risk of homelessness
- HUD **requires** a CoC to use an single HMIS to **record all participant information** from dedicated homeless projects; this includes CoC Program, ESG and SSVF; *other project types are welcome to join too!*
- You can record participant data elsewhere too (e.g. an Excel spreadsheet), but you **MUST** record it in HMIS

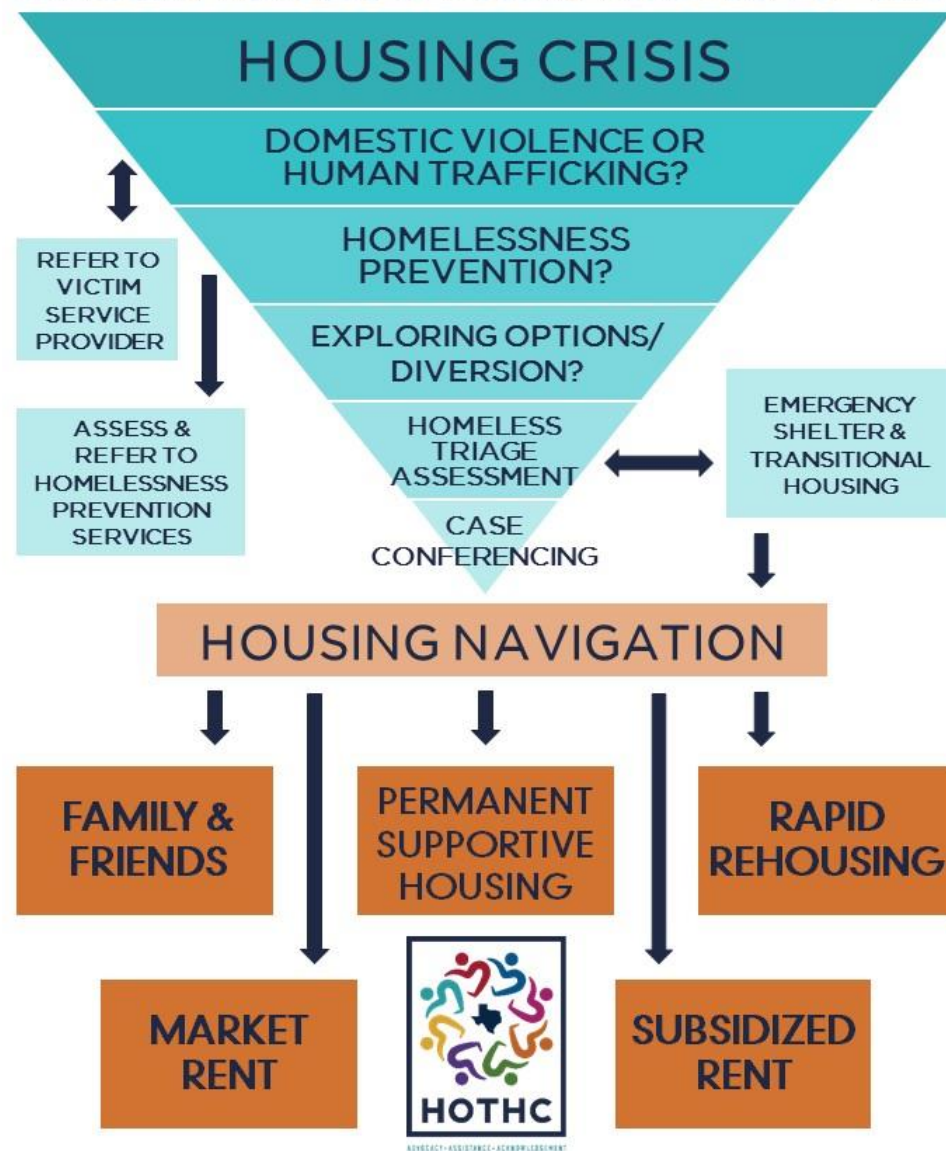
Coordinated Entry

- **Coordinated Entry** (CE) – a standardized access, assessment, and referral process for housing and other services across agencies in a community.
- All CoC funded projects **must** receive their referrals via CE
- HOTHHC CE system is called **Heart to Home**.
- Heart to Home operates 2 **physical access points** at Meyer Center and The Salvation Army Community Kitchen, as well as a **phone line** (254-297-8929) for participants to access CE in the entire Heart of Texas region.
- Heart to Home is overseen by the **CE Committee** of HOTHHC



HEART TO HOME

Connecting Homeless to Housing in the Heart of Texas



COC PROGRAM **NOFA**

CoC Program NOFA: **The Big Picture**

- Released **annually** by HUD as a competition; in **FY 2018**:
 - ~ \$2 billion awarded nationally
 - ~ \$97 million awarded in Texas
 - ~ **\$1 million awarded to our CoC**
- NOFA competition **rewards**:
 - System performance improvement to end & prevent homelessness
 - Data-driven decision making
 - Serving HUD-identified populations & priorities
 - Implementation of Housing First & Coordinated Entry

Competition **Caveats**

- NOFA is competitive, with caveats...
- Caveat #1: HUD tells us exactly how much money to apply for (**Annual Renewal Demand** = total dollar amount of all the CoC's projects that will be eligible for renewal), including how much bonus money we can apply for annually
- Caveat #2: HUD has historically funded everyone's **Tier 1** projects (Tier 1 projects = 94% of the total Annual Renewal Demand). Doing well in the NOFA competition meant **Tier 2** and **Bonus** projects are more likely to be funded

Other **Funding** Considerations

- All applications must provide **25% match** for all funds EXCEPT leasing funds.
- New projects can apply for money available through **reallocation** and **bonus** amounts. Depending on the NOFA, some years it can be a combination of both.
- HUD CoC Grant is a **reimbursement** grant. Draws are made quarterly, at a minimum, in HUD's eLOCCS system.

Application Process: **Scoring**

- Once the NOFA is released, agencies create their **project applications** in e-Snaps, save them as PDFs, and submit them and other materials necessary for scoring to the CoC Administrator
- Projects are reviewed and scored by **Scoring & Ranking Committee**
- New and Renewal projects are scored on very different **criteria**:
 - ***New projects** are scored primarily on the strength of their application and the organization's past experience delivering related services; threshold criteria*
 - ***Renewal projects** are scored primarily based on their previous year's performance data; threshold criteria*

Application Process: **Ranking**

- Projects are either **accepted**, **accepted with required modifications** such as reduced budgets, or **rejected**
- Modified or rejected projects may **appeal** (see HOTHG Grievance Policies & Procedures)
- Accepted projects are **ranked** in either Tier 1 or Tier 2; both Tiers are submitted to HUD as part of the Collaborative Application
- **Tier 1** is 94% of the total Annual Renewal Demand; **Tier 2** is 6%
- Higher tiers and higher scores are more likely to **receive funding**

What Can You Fund with CoC Program Funds?

- CoC Program **funds** Permanent Supportive Housing (PSH), Rapid Re-housing (RRH), Transitional Housing (TH), Joint Component Transitional Housing – Rapid Re-housing (TH-RRH), and Supportive Services Only grants for Coordinated Entry
- CoC program **also funds** Planning and HMIS
- **New projects** may apply for PSH, RRH and TH-RRH grants (and dependent on the NOFA, TH and SSO-Coordinated Entry grants)

Project Types

- **Permanent Supportive Housing (PSH)** provides permanent, open-ended housing assistance and services to people who are homeless and have disabilities
- **Rapid Re-housing (RRH)** provides housing without a designated length of stay where the agency provides short or medium-term rental assistance and services to people who are homeless
- **Joint Component Transitional Housing – Rapid Re-housing (TH-RRH)** combines TH and RRH; transitional housing on its own is not typically funded except for youth and domestic violence sub-populations

Eligible Costs

- Administrative (up to 10% of the total budget)
- HMIS
- Rental Assistance
- Leasing
- Operating Costs
- Supportive Services
- Acquisition
- Rehabilitation
- New Construction
- Indirect Costs (in accordance with 2 CFR 200, subpart E)

Additional resources about eligible costs can be found at:

<https://www.hudexchange.info/resources/documents/CoCProgramFundingforHMIS.pdf>

<https://www.hudexchange.info/resource/2033/hearth-coc-program-interim-rule/>

Additional **Information**

- For more information about the CoC Program, please contact:
Nicole Wiscombe
Continuum of Care Administrator
nicolew@wacotx.gov
254-750-5777
- To find additional resources about **our Continuum of Care** visit:
<http://www.heartoftexashomeless.org/continuum-of-care/>
- To find additional resources about **HUD's CoC Program** visit:
<https://www.hudexchange.info/programs/coc/>